

SIGNATURE HOUSE

by WOLFSCHMIDT

Project developed by



This project breathes new life into a historic complex at the corner of **Hanzas and Rūpniecības Streets**—a place where mid-century modern forms meet the enduring charm of 19th-century brick architecture.

SIGNATURE HOUSE

by WOLFSCHMIDT



SIGNATURE HOUSE

ONE DEVELOPMENT

QUALITY, AESTHETICS, EXPERIENCE

We are developers in Latvia, with more than 8 years of experience, working with renovation of historic buildings in the premium segment. Renovating 19th-century buildings requires not only expertise and long-term cooperation with architects, historians and construction experts, but also patience, respect and the ability to see value where others see complications.

The creative process is essential in our developments - we look for ways to preserve the identity of the building while creating modern living conditions that are important to our clients. This combination is what makes each One Development project unique.

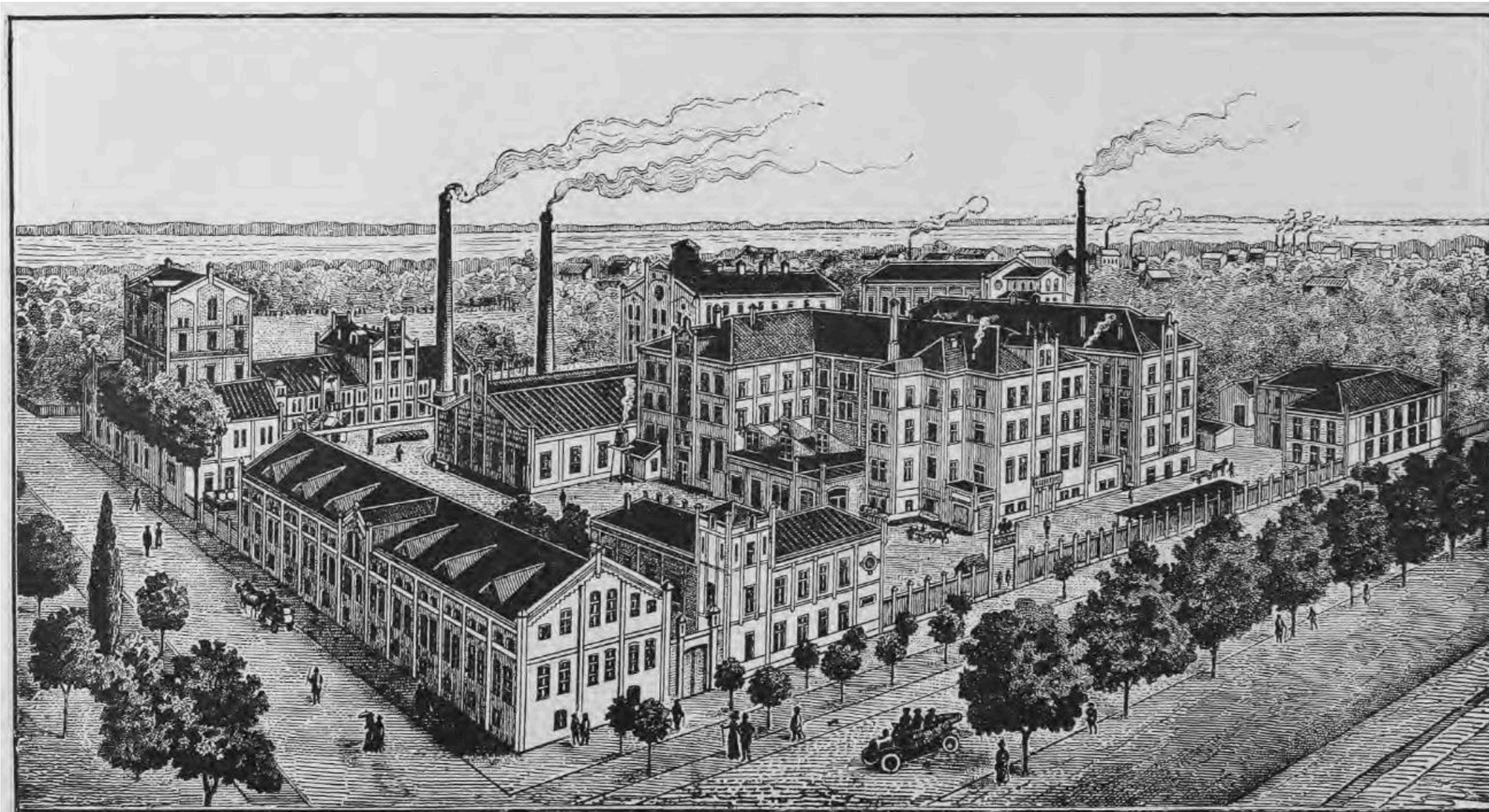




FROM MANUFACTORY TO MASTERPIECE



HISTORY & CONCEPT



Москва 1882.

Акционерное общ. дрожжево-винокуренного,  спирто-очистительного и водочного заводовъ

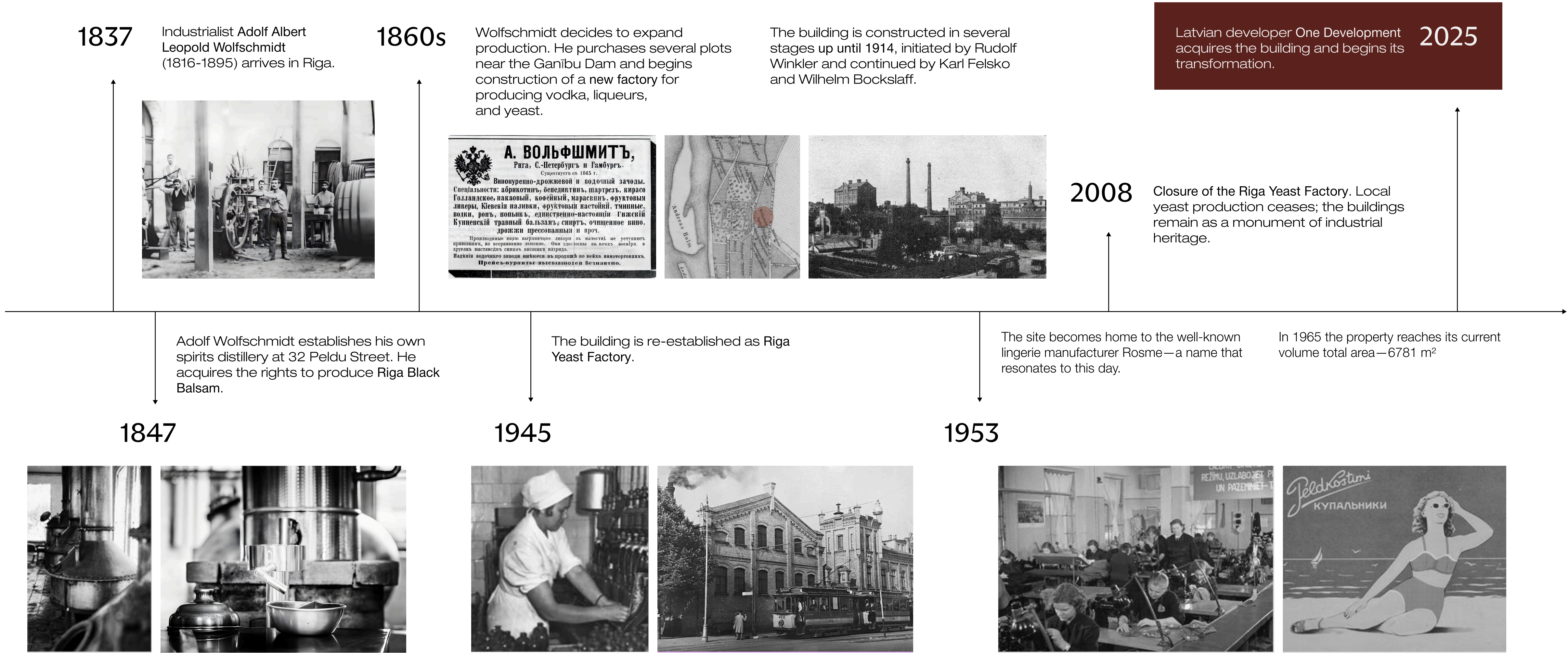
А. ВОЛЬФШМИДТЪ ВЪ РИГѢ.

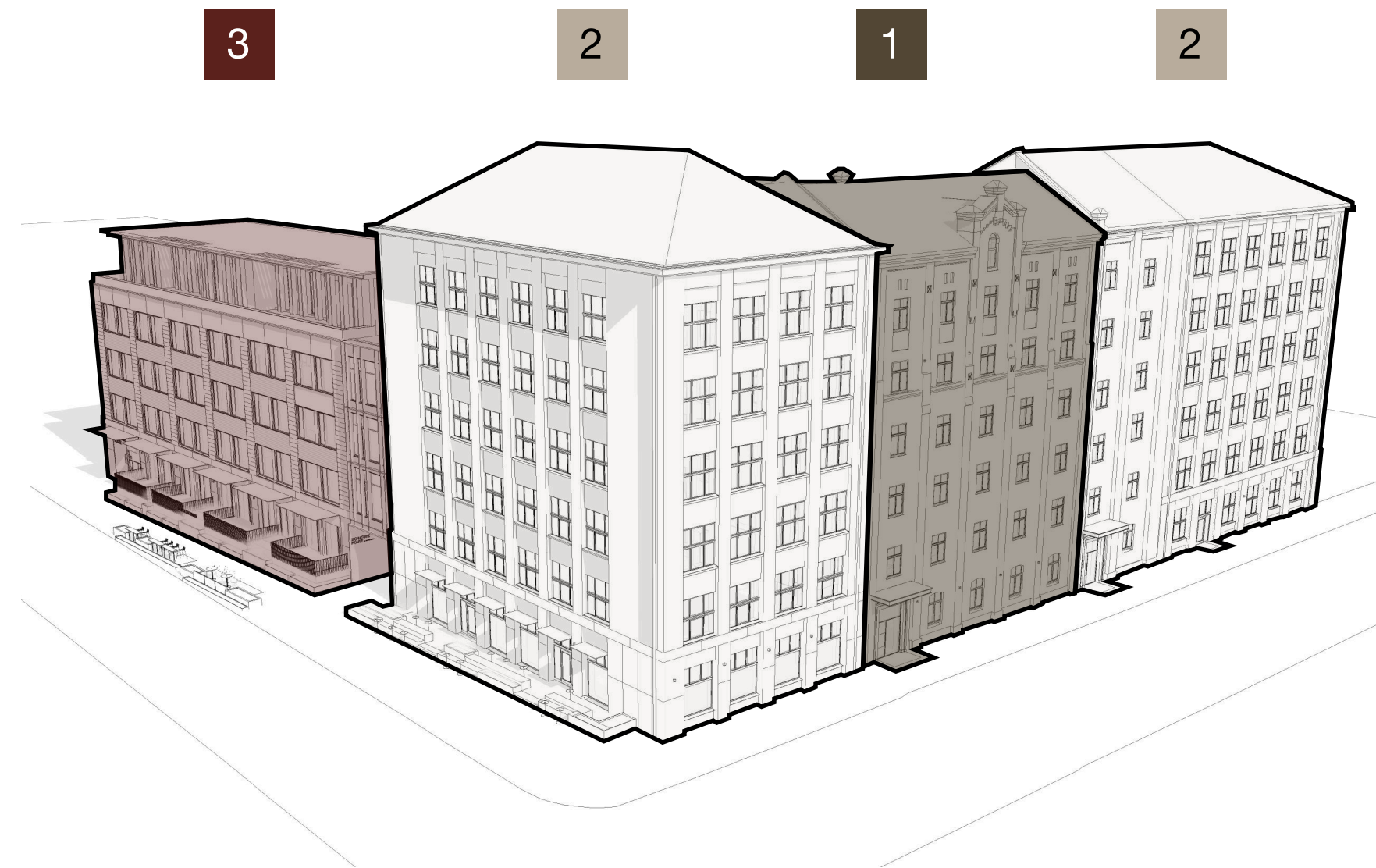
—•— ОСНОВАНО ВЪ 1847 Г. —•—

На всѣхъ выставкахъ первая и высія награды: 5 почетныхъ дипломовъ, 14 золотыхъ медалей,
4 серебряныя и 4 бронзовыя медали, „Grand Prix“ Парижъ 1900.



Нижній-Новг.
1896.





1

LATE 19TH CENTURY

In the 1860s, Wolfschmidt built a factory between today's Hanzas, Rūpniecības, and Pulkveža Brieža Streets, producing yeast and the famed Riga Black Balsam. Designed by Rudolf Winkler, later refined by Karl Felsko and Wilhelm Bockslaff, it became a hallmark of 19th-century brick industrial style. The standout building on Hanzas Street, created by Bockslaff in 1899, gained two extra floors in the early 1900s.

2

1950–1960S

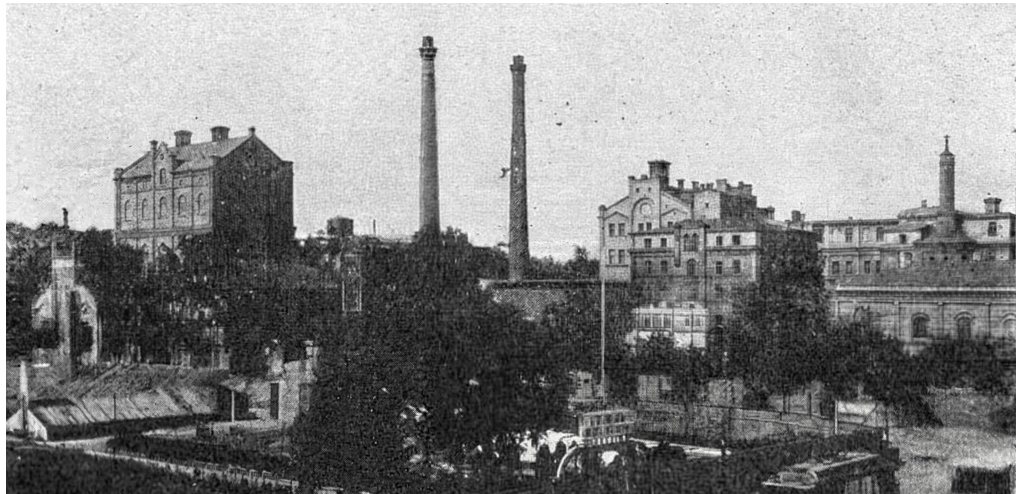
In the mid-20th century, Bockslaff's building became home to the Rosme garment factory. Between 1955 and 1965, two modernist wings were added, marked by functional design, clean lines, and a rhythmic pattern of large windows.

3

1970S

The final addition was the Rūpniecības Street wing, constructed in the 1970s. It embodies the late Soviet modernist style—more utilitarian, standardized, and somewhat impersonal. Together, these buildings shaped the urban fabric of the Hanzas–Rūpniecības intersection as it appears today.

DIALOGUE



OF TIMES

BASE

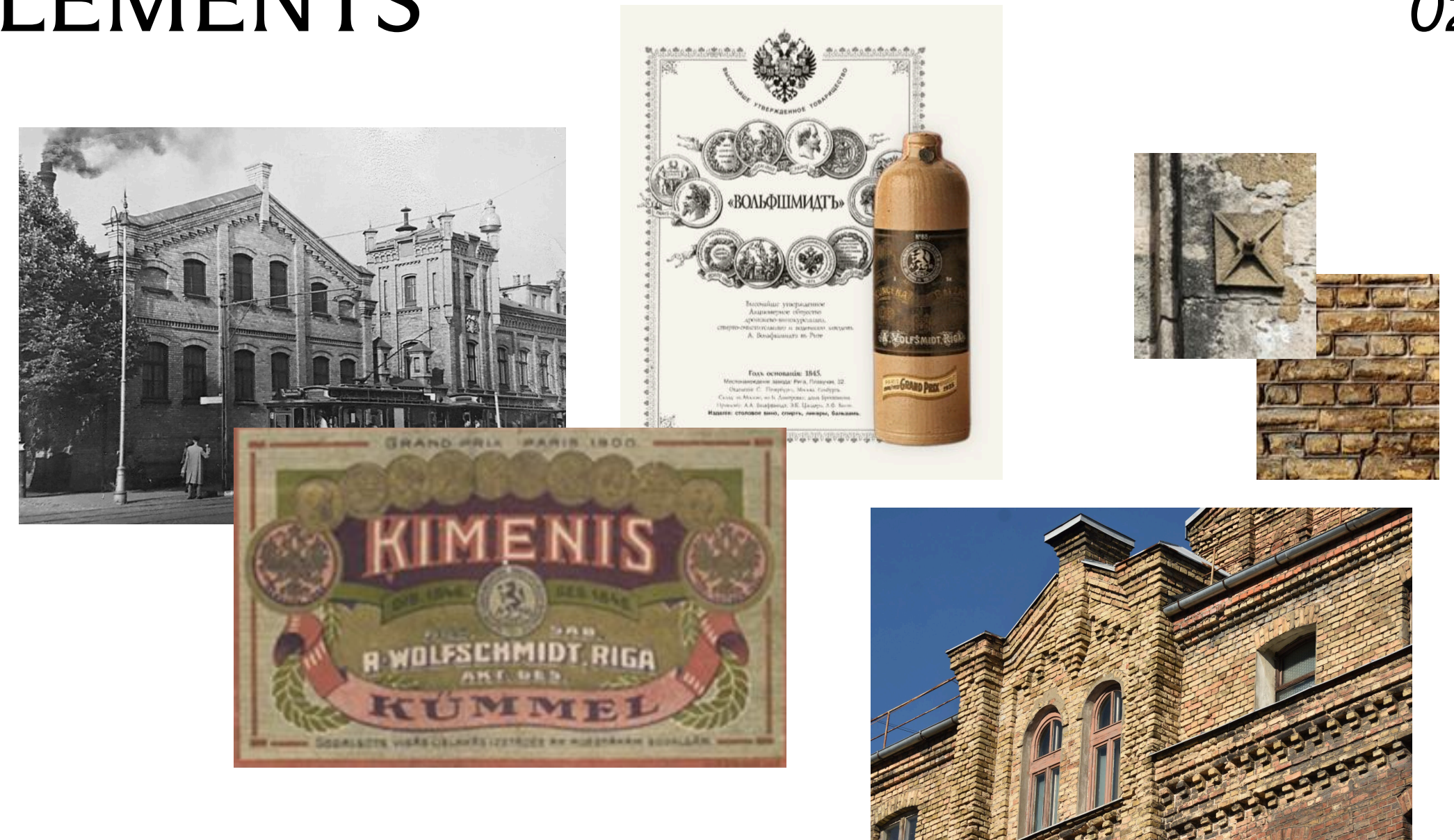
01



The aesthetics of mid-century modern, a design and architectural movement popular in the 1950s and 1960s, when the main volume of the building was constructed.

ELEMENTS

02



The aesthetics of 19th-century industrial enterprises & products of the Wolfschmidt factory.

SIGNATURE by WOLFSCHMIDT HOUSE

| | | | | | | |
|---|---|----|----|----|----|----|
| 1 | 5 | 9 | 13 | 17 | 21 | 25 |
| 2 | 6 | 10 | 14 | 18 | 22 | 26 |
| 3 | 7 | 11 | 15 | 19 | 23 | 27 |
| 4 | 8 | 12 | 16 | 20 | 24 | 28 |



THE SPIRIT OF ENTREPRENEURSHIP AND FORWARD MOVEMENT

From the 19th century through the 20th and into the 21st, this place has always been about creativity, skill, and progress—a true dialogue between times.

Signature House carries this legacy forward, blending history, ambition, and the timeless spirit of making something exceptional.

SIGNATURE HOUSE

by WOLFSCHMIDT



LOCATION & ARCHITECTURE

SIGNATURE HOUSE

by WOLFSCHMIDT

The project is uniquely located at the junction of three Riga districts—the **Quiet Centre**, **Skanste**, and **Pētersala-Andrejsala**—bringing together the elegance of Art Nouveau architecture, the modern business environment, and the vibrant waterfront transformation of Andrejosta.

ANDREJOSTA



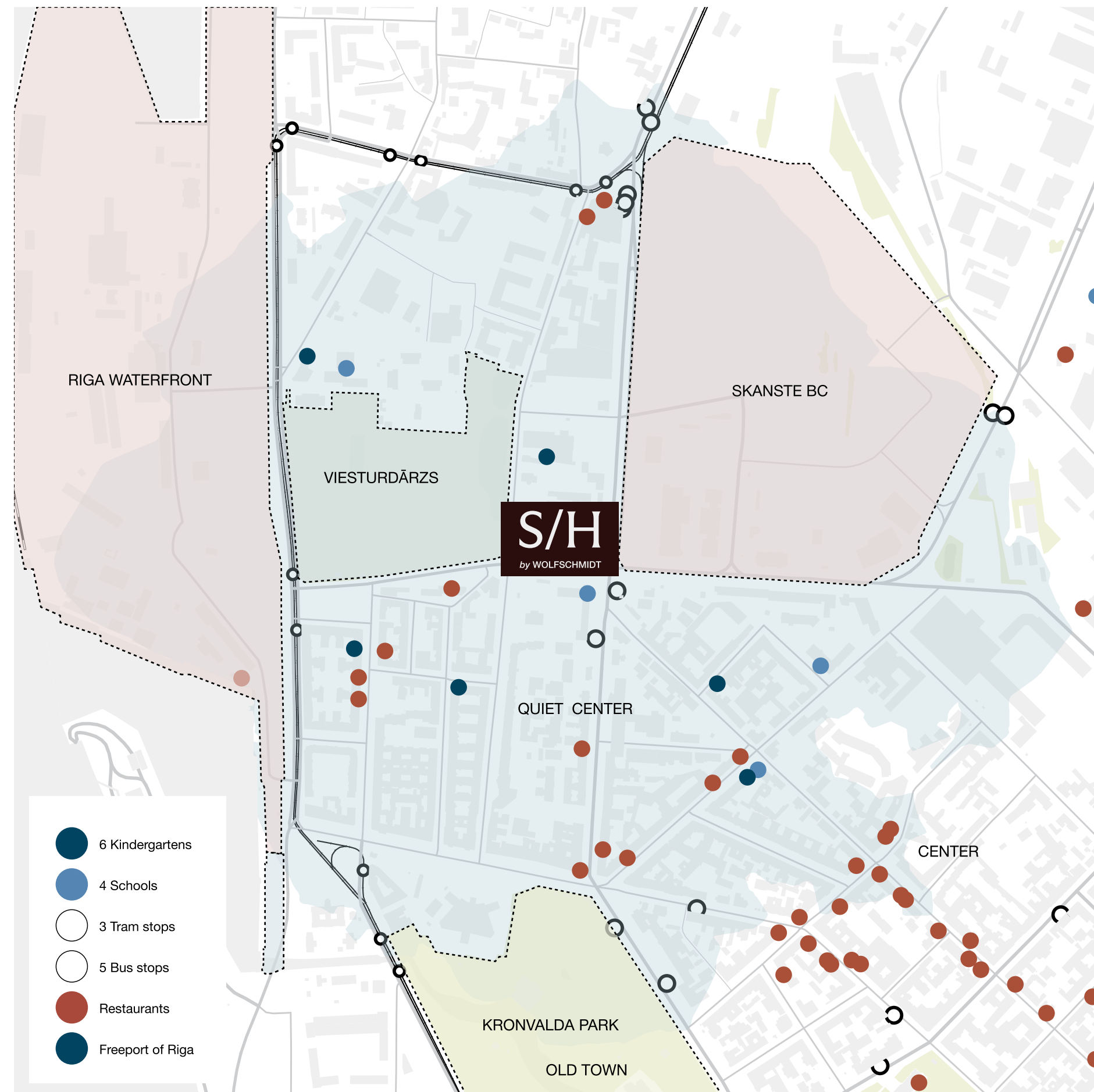
A historic and dynamic port area undergoing transformation, offering unique views and a distinct maritime atmosphere with glimpses of ongoing city development.

VIESTURDĀRZS



Across the street from the building lies Viesturdārzs, the oldest park in Riga, founded in 1721—historically created as a royal garden, which has been preserved as a peaceful and green spot in the urban landscape, featuring an outdoor fitness area and a special dog-walking area where pets can roam off-leash.

LOCATION & INFRASTRUCTURE



BUSINESS DISTRICT



A key commercial hub near the city center, featuring modern office complexes and infrastructure that supports a dynamic professional environment.

QUIET CENTER



One of Riga's most prestigious neighborhoods, is renowned for its elegant Art Nouveau architecture. It offers walking distance to the historic city center, a rich cultural and culinary scene away from the tourist flow.

SIGNATURE HOUSE

by WOLFSCHMIDT



INNER YARD



EVERY APARTMENT HAS A UNIQUE VIEW



VIESTURDĀRZS



CITY VIEW



SIGNATURE HOUSE

by WOLFSCHMIDT



SIGNATURE HOUSE

by WOLFSCHMIDT





FAMILY FOCUSED APARTMENTS

YOUNG SPECIALISTS + INVESTMENT APARTMENT

CLEAR STRUCTURE. THOUGHTFUL APARTMENT MIX



COMMERCIAL PREMISES



PUBLIC TERRACES
OVERLOOKING THE PARK



PRIVATE TERRACE
OVERLOOKING THE PARK &
INNER YARD



PRIVATE INNER YARD



PARKING & AMENITIES

SIGNATURE HOUSE

by WOLFSCHMIDT

89

TOTAL APARTMENT

3

COMMERCIAL SPACE

42

2 ROOMS
(ONE BEDROOM)

17

3 ROOMS
(TWO BEDROOMS)

11

4 ROOMS
(THREE BEDROOMS)

1

5 ROOMS
(FOUR BEDROOMS)

2

PENTHOUSE

12

APARTMENT WITH
TERRACE

16

STUDIO

27

R1 HALLWAY
(APARTMENTS)

26

R2 HALLWAY
(APARTMENTS)

36

H HALLWAY
(APARTMENTS)

APARTMENTS COMPOSITION



SIGNATURE HOUSE

by WOLFSCHMIDT



PUBLIC INFRASTRUCTURE

 ONE DEVELOPMENT

SIGNATURE HOUSE



BICYCLES



BABY STROLLERS



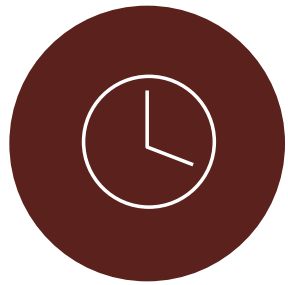
MAILBOX



SAFETY & ACCESS CONTROL



PAW WASH



WAITING AREA



BARRIER-FREE ACCESS

PUBLIC INFRASTRUCTURE

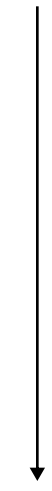
by WOLFSCHMIDT



SIGNATURE HOUSE

24

PARKING



12

WITH ELECTRIC
STATION

PUBLIC INFRASTRUCTURE

by WOLFSCHMIDT



SIGNATURE HOUSE

by WOLFSCHMIDT



SIGNATURE HOUSE

by WOLFSCHMIDT

Presentation created by



UMAGAMMA